



**TGH**

Making Integrations Simpler



# Atom Installation

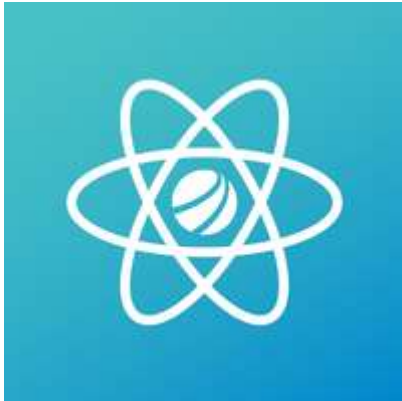


In this blog we will cover what is an atom and how to install an atom in Boomi.

**Prerequisites:** The machine where atom is installed must have the internet connectivity

Windows 32/64bit OS

To begin with, let us see what is an atom.



### What is Atom?

Atom is a single-tenant, single node runtime engine to execute the integrations developed in Boomi. We can install Atoms directly into your local network which is required for an on-premise deployment model.

Now, let us see the steps to install an atom.

**Step1:** Firstly, log on to Boomi platform (<https://platform.boomi.com/>) with user name and password.

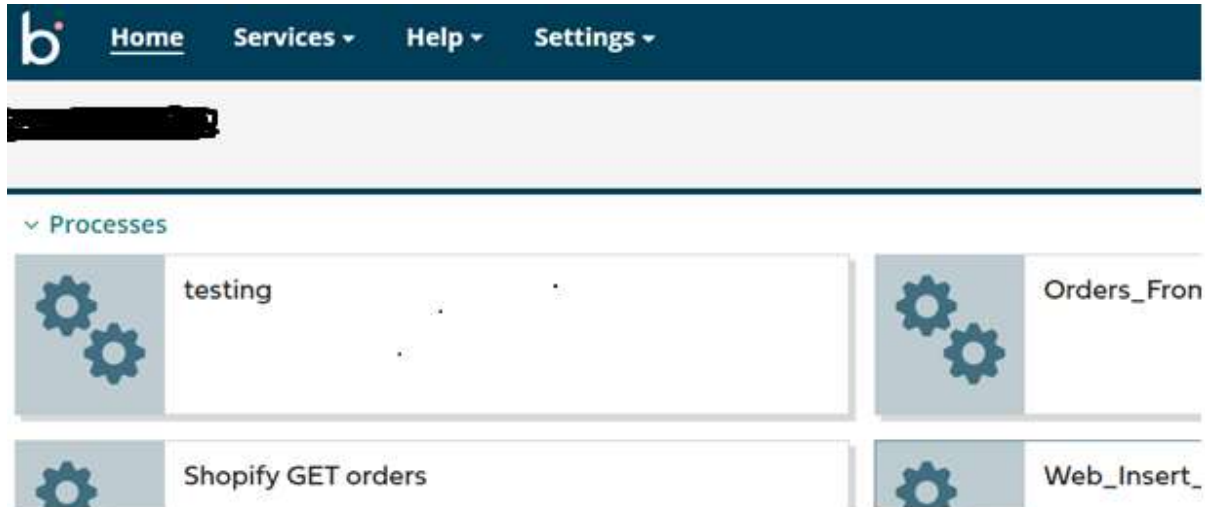


©[TGH Software Solutions Pvt. Ltd.](#)

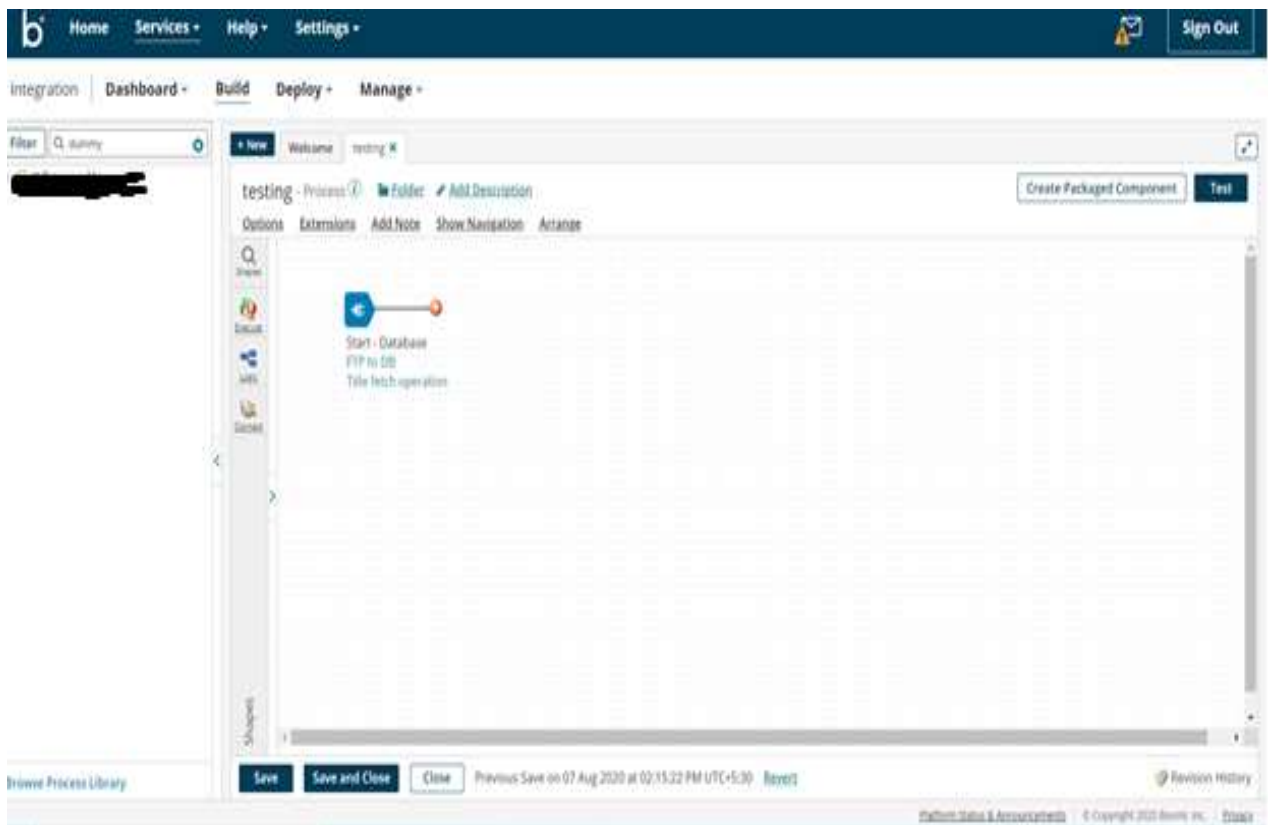
No part of this document may be copied, reproduced, republished, uploaded, posted, publicly displayed, encoded, translated, transmitted or distributed in any way to any other computer, server, website or other medium for publication or distribution, without TGH's prior written consent



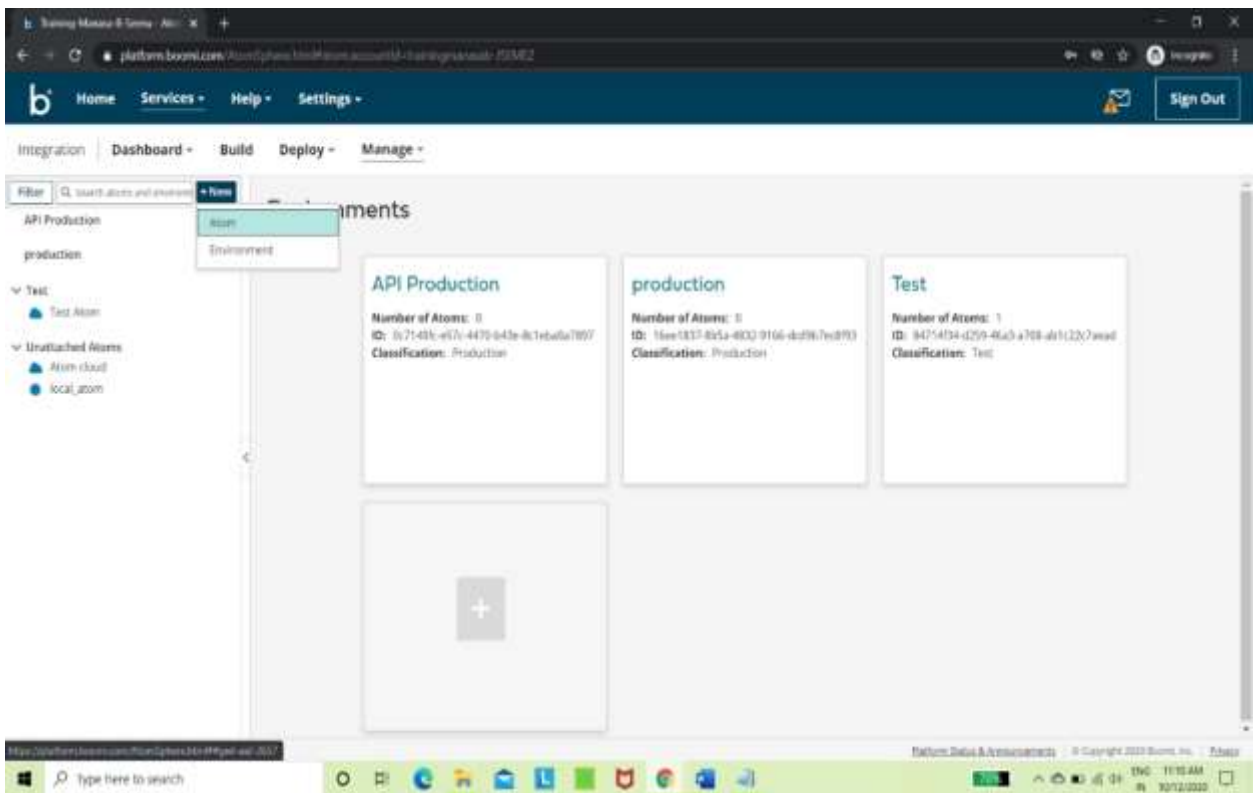
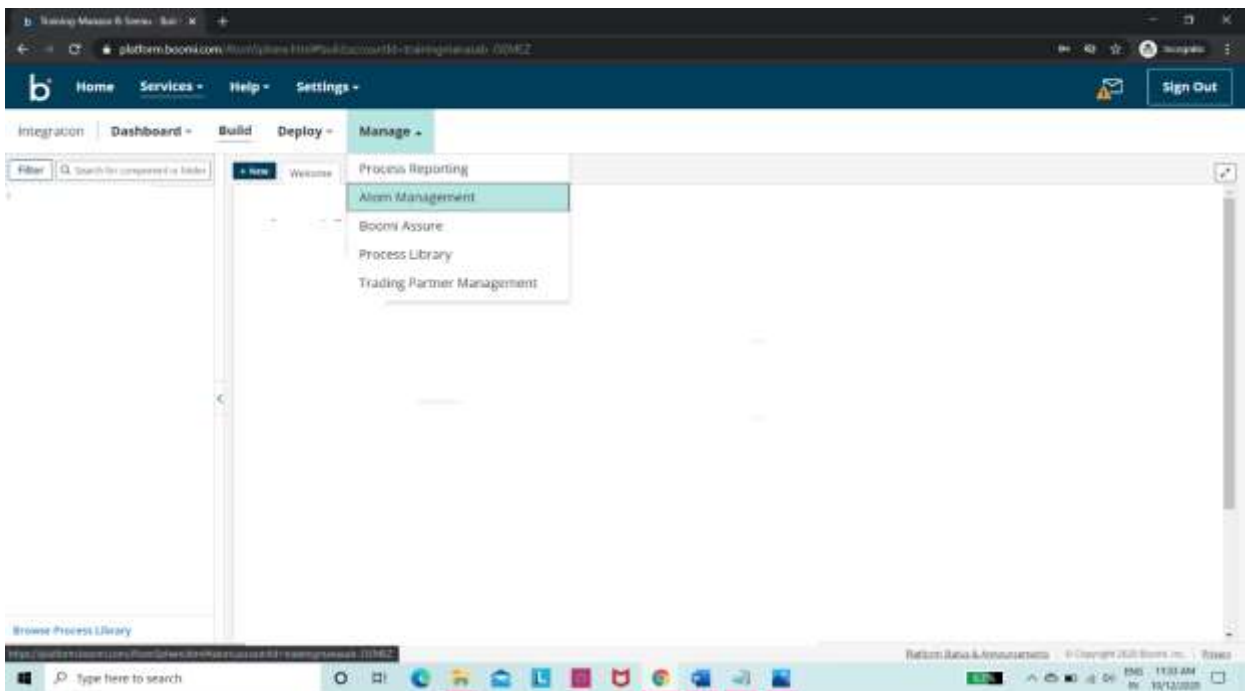
**Step 2:** Once, you have logged into Boomi platform, you will be able to view Home page.



**Step 3:** Now, click on Services followed by Integration. You will see Build page.



**Step 4:** Click on manage  atom management tab and you can see new tab on the left corner beside filter. Click on it. You can then see atom and environment, click on atom.

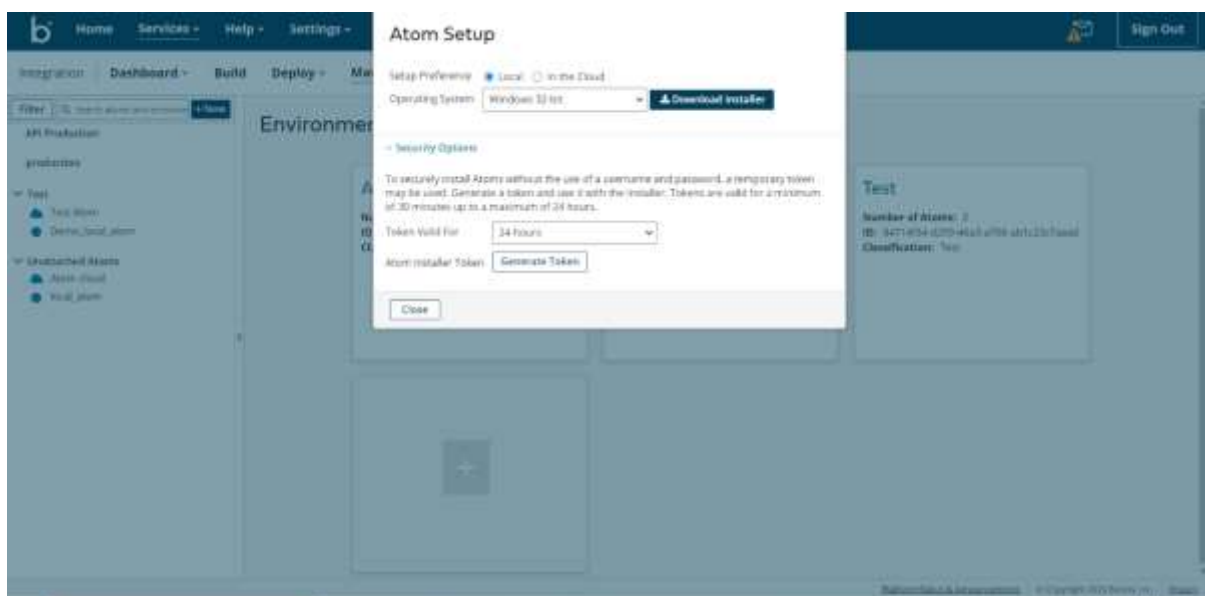


**Step 5:** Once you click on atom, you will find an atom set up page where you have to set up preference as local (as we are concerned about local atom) and select operating system based on the configuration of your machine.

We have 2 ways of authenticating Boomi Atomsphere account with runtime.

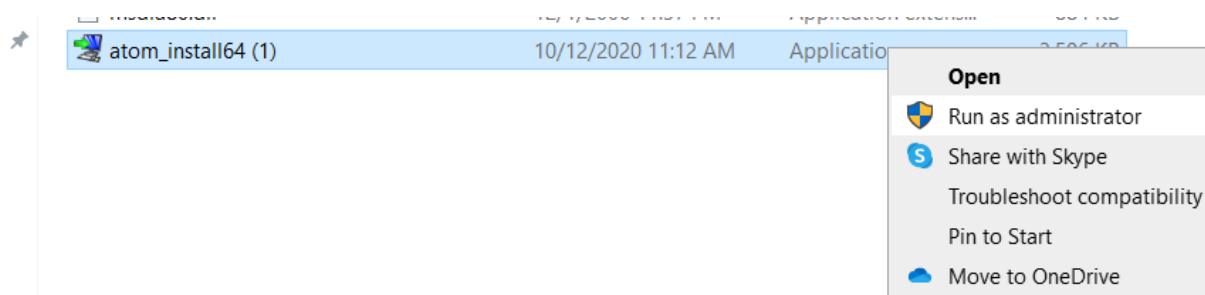
1. Authenticating with username and password
2. By using token

Security Options refer to an option of generating token and use it for atom installation. Instead of authenticating with username and password, we can use token and authenticate with Atomsphere Boomi account. A token is valid only for the account in which it was generated. Tokens expire after a set amount of time ranging from 30 minutes to 24 hours.



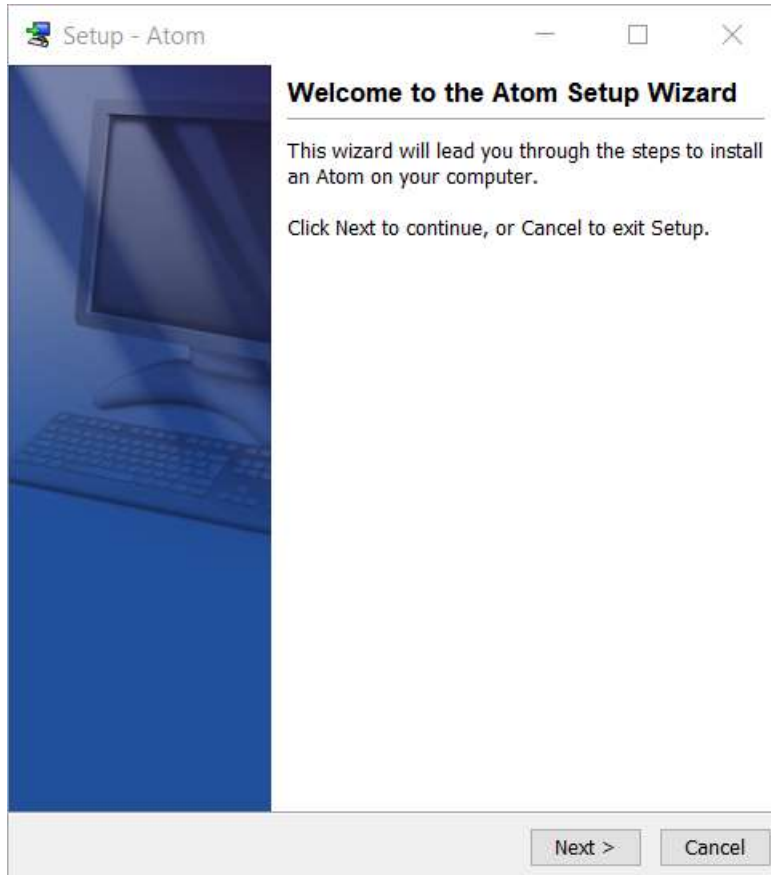
**Step 6:** Now, click on download installer and after downloading the Atom installer, run the executable file.

**NOTE:** Do not forget to run executable file as an Administrator. We can right click on the file and run as administrator



**Step 7:** Now, you see a security verification window, click yes and the Atom Setup Wizard opens,

Click Next.



**Step 8:** The User Information page is displayed.

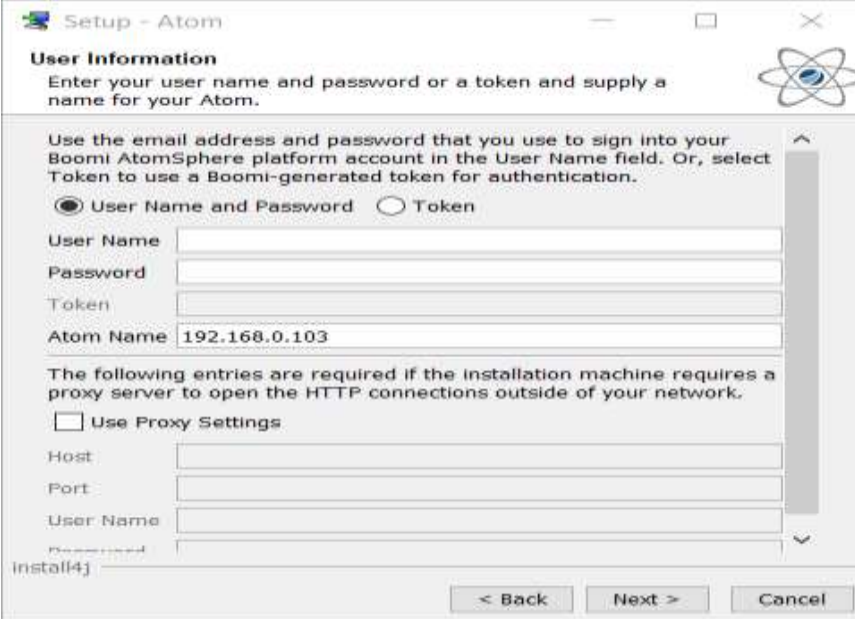
Select username with password (or) token depending on how you want atomsphere account to authenticate with atom and enter the name of an atom which you want to see in the Atom Management tab. The default name for an atom is host name but you can give any other name.

Enter one of the following, depending on the option you have selected

- user name and password
- (or)
- a valid token (which is generated during atom installer download)

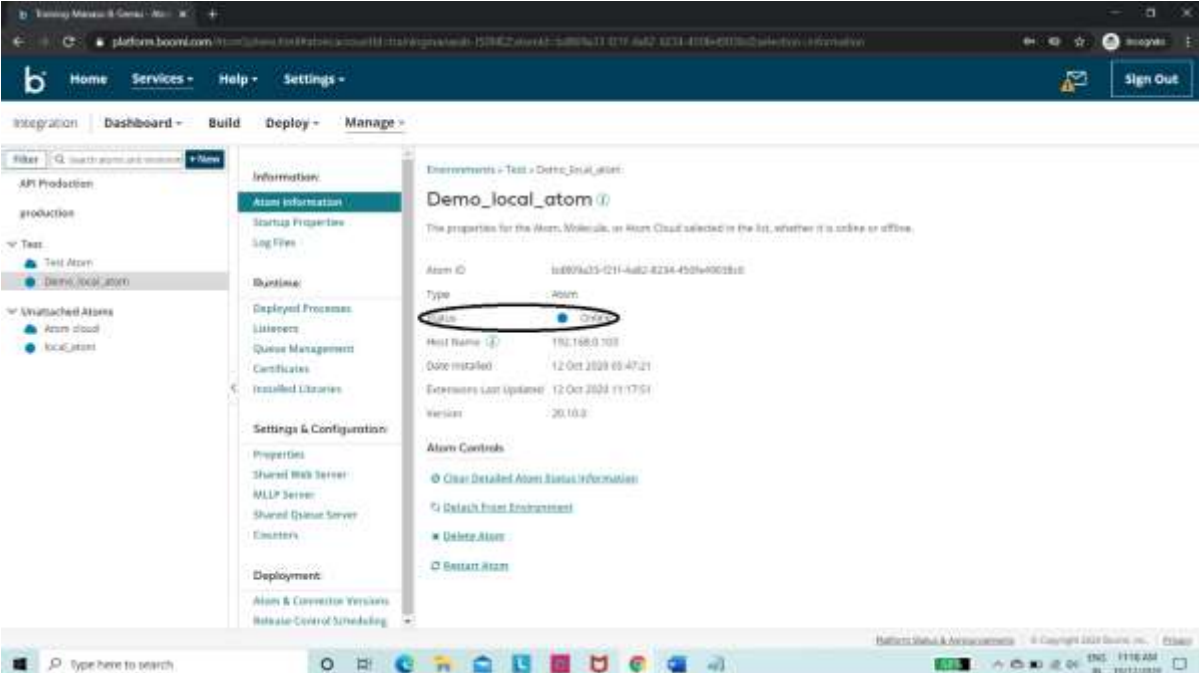
©[TGH Software Solutions Pvt. Ltd.](#)

Click Next.



**Step 9:** Now, you are able to authenticate Atomsphere Boomi account with runtime. when the installation is complete, click Finish.

**Step 10:** To confirm the atom installation you can log in to <https://platform.boomi.com/> and go to Manage tab followed by Atom Management tab and you see an atom with status as online.



©TGH Software Solutions Pvt. Ltd.

No part of this document may be copied, reproduced, republished, uploaded, posted, publicly displayed, encoded, translated, transmitted or distributed in any way to any other computer, server, website or other medium for publication or distribution, without TGH's prior written consent





# TGH

Making Integrations Simpler



## TGH Software Solutions Pvt. Ltd.

[www.techygeekhub.com](http://www.techygeekhub.com)

At TGH, we specialize in driving digital transformation through seamless Integration Technologies.

Operating as an INTEGRATION FACTORY, we serve as a one-stop shop for all your integration needs. Our expert team is well-versed in enterprise software and legacy system integration, along with leading iPaaS technologies like Boomi, MuleSoft, Workato, OIC, and more.

We're committed to enhancing business processes and solving problems through our integration expertise.



### Email address

[connect@techygeekhub.com](mailto:connect@techygeekhub.com)



### Phone number

+ 011-40071137  
+ 91-8810610395



### Our offices

#### Noida Office

iThum  
Plot No -40, Tower A,  
Office No: 712,  
Sector-62, Noida,  
Uttar Pradesh, 201301

#### Hyderabad Office

Plot no: 6/3, 5th Floor,  
Techno Pearl Building,  
HUDA Techno Enclave,  
HITEC City, Hyderabad,  
Telangana 500081

