



**TGH**

Making Integrations Simpler

boomi  
Partner



# Formatting Date in Boomi



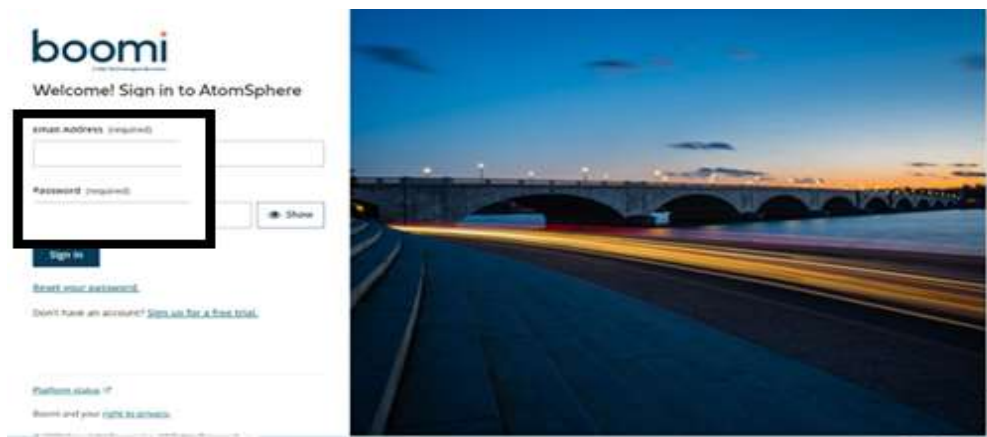
## FORMATTING DATE FROM YYYY-MM-DD TO YYYYMMDD IN BOOMI.

In this blog, we will see how to format date from YYYY-MM-DD to YYYYMMDD in Boomi.  
In this Use Case,

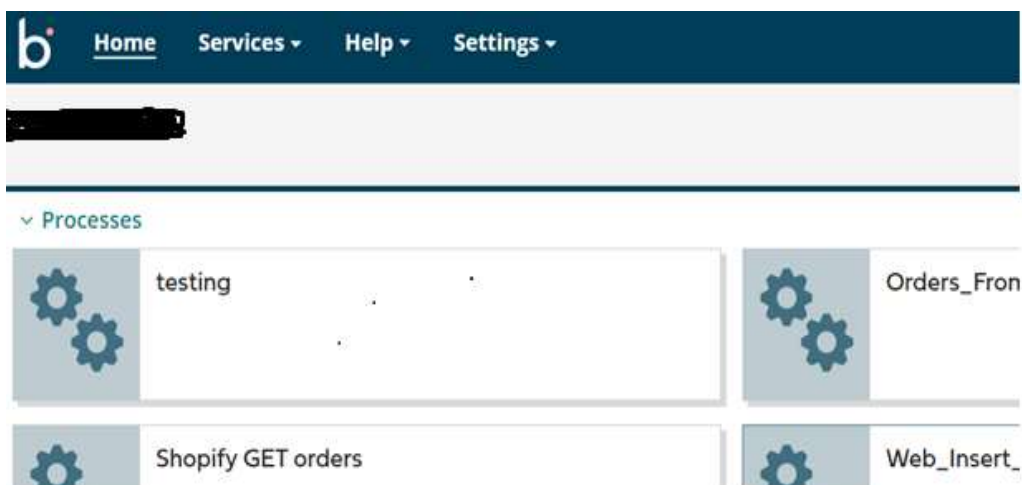
- We will pass a sample xml document through message shape which contains date in YYYY-MM-DD format.
- We will use map shape for custom scripting to convert the date from YYYY-MM-DD format to YYYYMMDD.

Let us begin with the steps.

**Step 1:** Log on to Boomi platform (<https://platform.boomi.com/>) with required credentials i.e Email Address and Password.



**Step 2:** Once logged into Boomi platform, we will be able to view Home page.

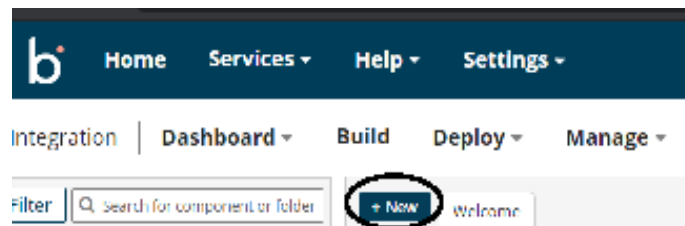
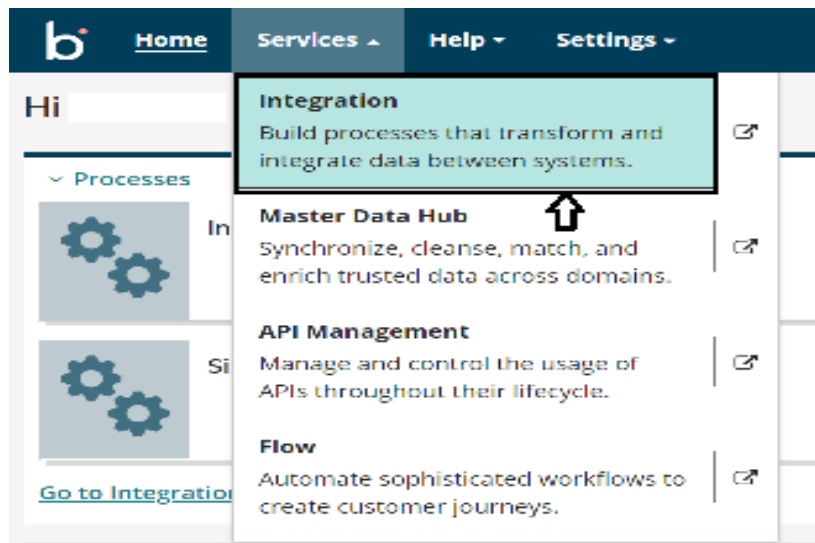


©[TGH Software Solutions Pvt. Ltd.](#)

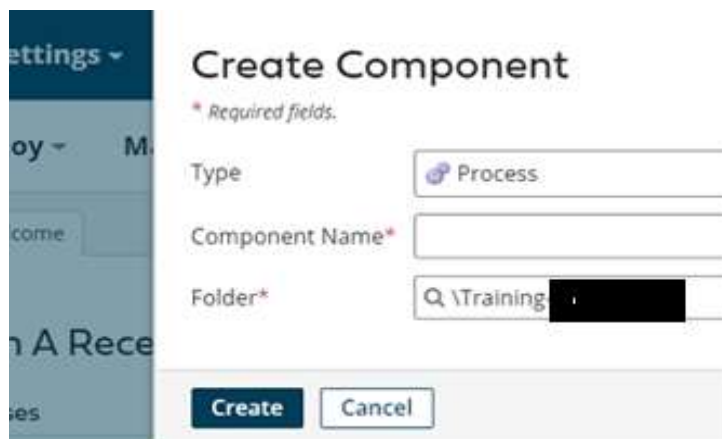
No part of this document may be copied, reproduced, republished, uploaded, posted, publicly displayed, encoded, translated, transmitted or distributed in any way to any other computer, server, website or other medium for publication or distribution, without TGH's prior written consent



**Step 3:** Now, click on Services followed by Integration. We will see the Build page. Click on New.



**Step 4:** Once, clicked on New, we will be able to see three fields i.e., Type, Component Name and Folder.



- Select Type as process as we are building a process. Component Name and Folder can be given based on your choice (i.e., which name to be given and where do we want to create the process). Click on create.

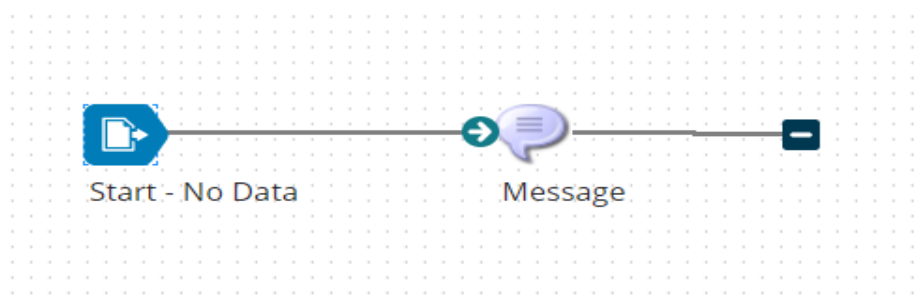
**Step 5:** We see that the process gets created with a start shape which is configured with AS2 Shared Server by default.



**Step 6:** Select the start shape and choose No Data. Click ok.

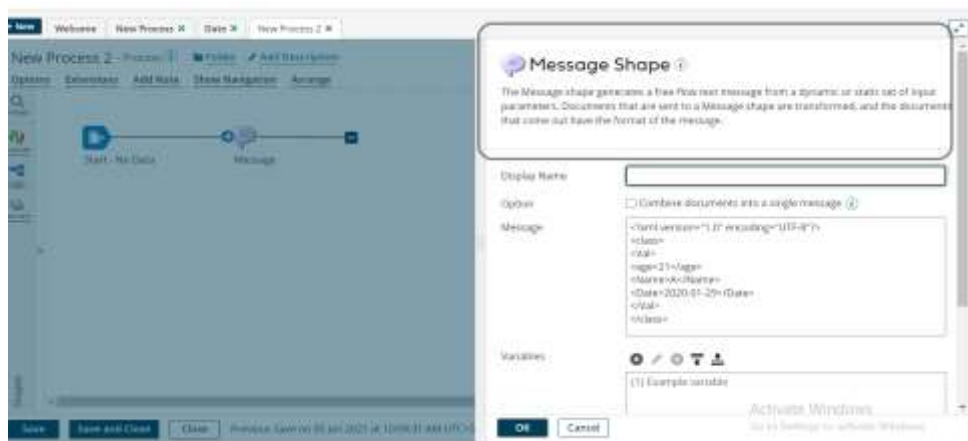


**Step 7:** Search for Message shape in search pallet. Drag and drop the shape onto process canvas and place it after start shape.

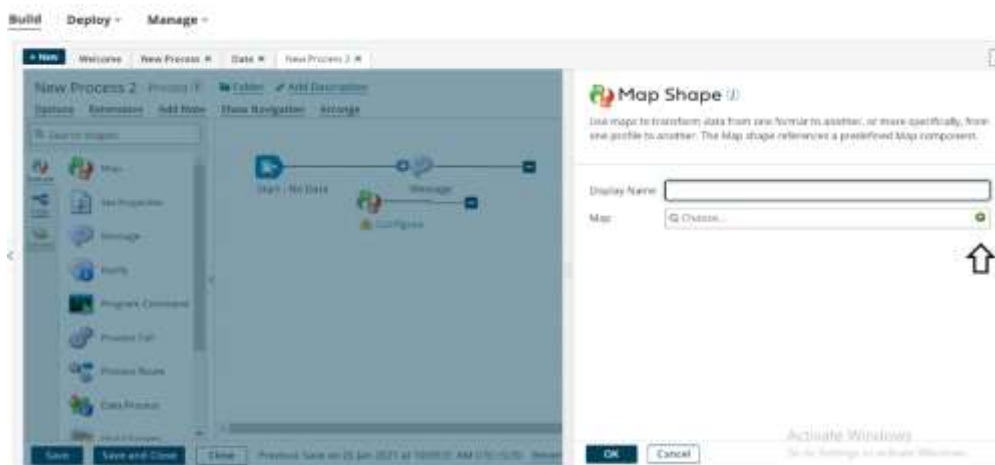


**Step 8:** Click on configure and pass the sample xml code through message shape and click ok. Create an xml file with code below and save it.

```
<?xml version="1.0" encoding="UTF-8"?>
<class>
<Val>
<age>21</age>
<Name>A</Name>
<Date>2020-01-01</Date>
</Val>
</class>
```



**Step 9:** Search for Map shape in search pallet. Drag and drop the shape onto process canvas and place it after Message shape. Click on the plus button.

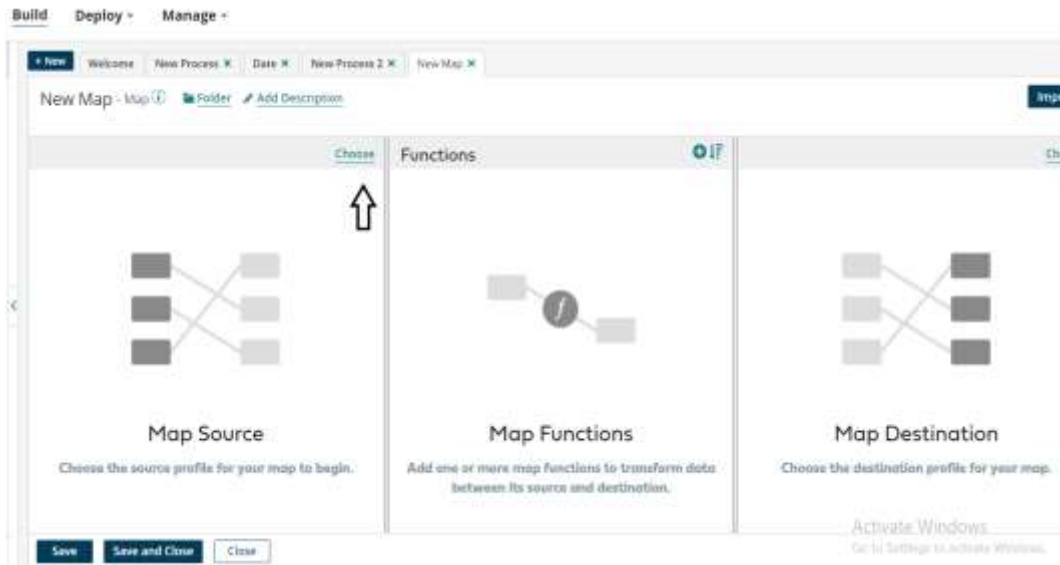


©[TGH Software Solutions Pvt. Ltd.](http://TGH Software Solutions Pvt. Ltd.)

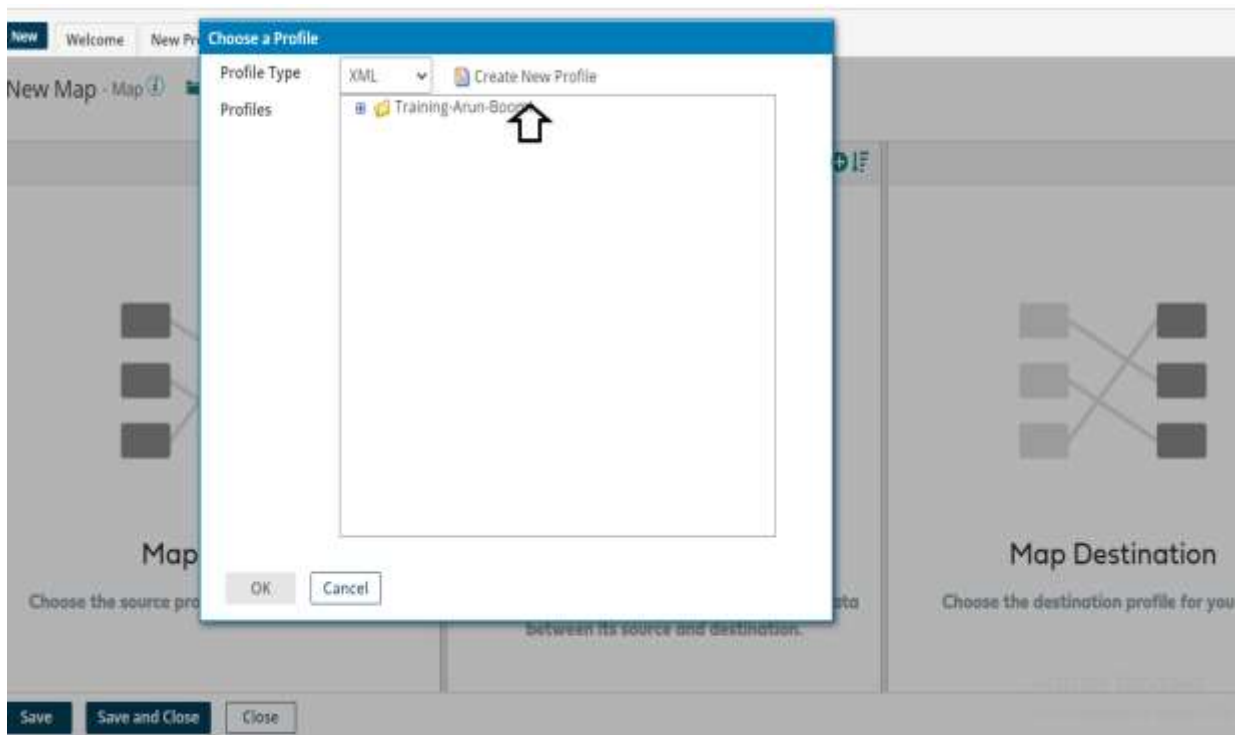
No part of this document may be copied, reproduced, republished, uploaded, posted, publicly displayed, encoded, translated, transmitted or distributed in any way to any other computer, server, website or other medium for publication or distribution, without TGH's prior written consent



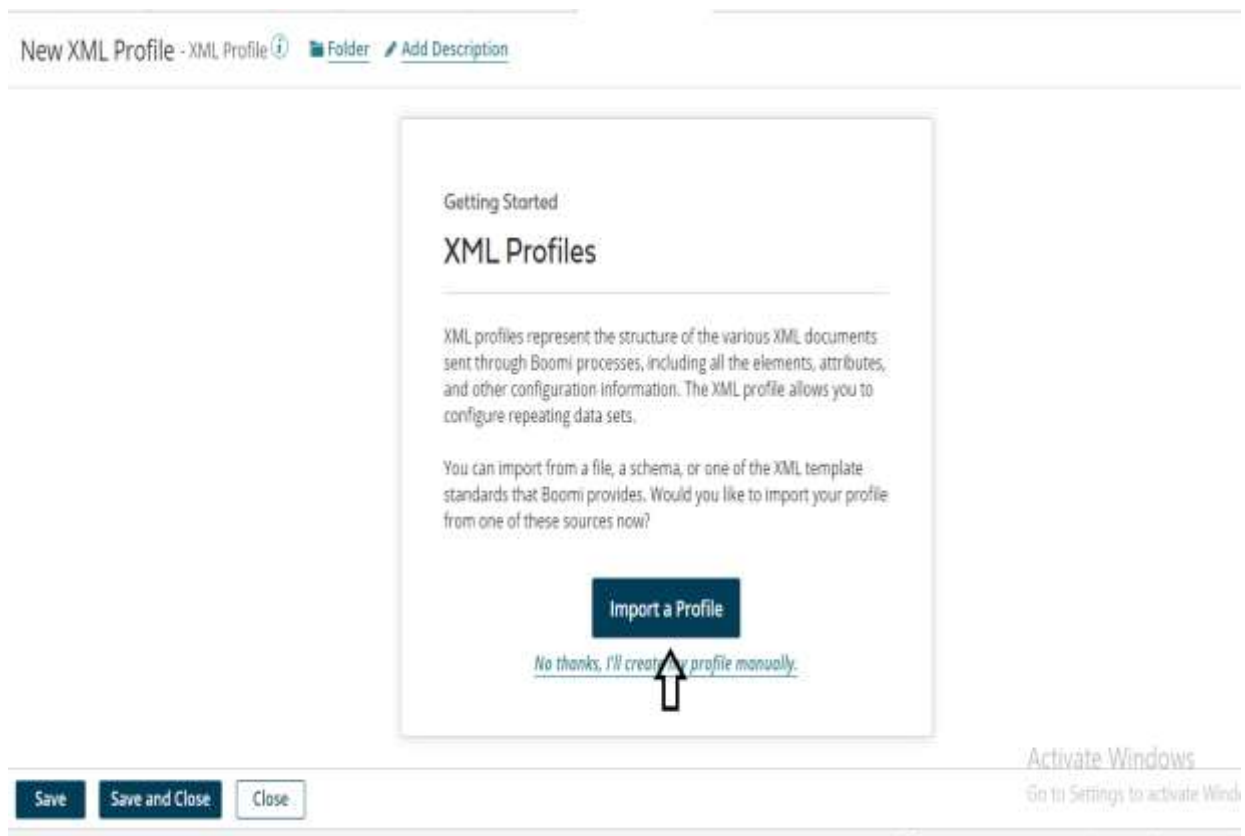
**Step 10:** Click on the choose button on the left side I.e., on the map source.



**Step 11:** Select XML from the drop down and click on the “Create new profile”.



**Step 12: Click on “Import a Profile”**



New XML Profile - XML Profile ⓘ Folder Add Description

Getting Started

## XML Profiles

XML profiles represent the structure of the various XML documents sent through Boomi processes, including all the elements, attributes, and other configuration information. The XML profile allows you to configure repeating data sets.

You can import from a file, a schema, or one of the XML template standards that Boomi provides. Would you like to import your profile from one of these sources now?

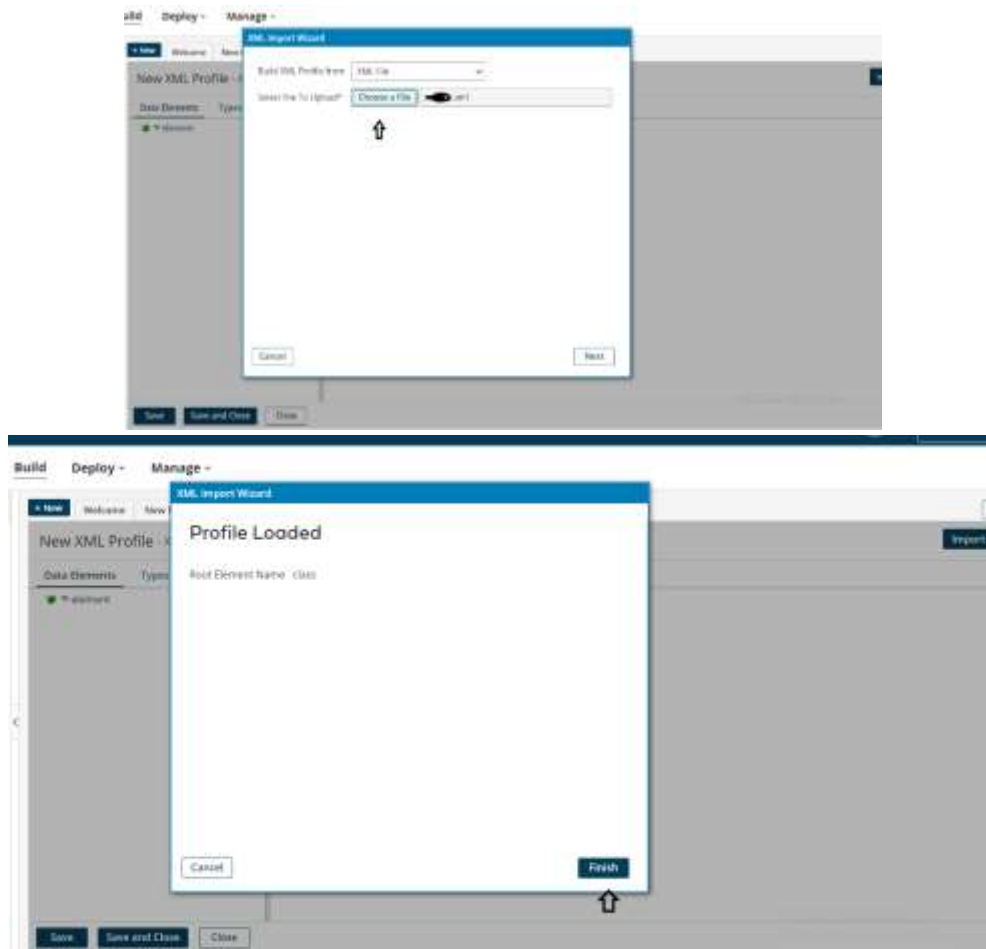
**Import a Profile**

[No thanks, I'll create my profile manually.](#)

Save Save and Close Close

Activate Windows  
Go to Settings to activate Windows

**Step 13:** Click on choose a file and browse for the xml file we created and click next. Click on finish.



**Step 14:** Click on save and close.



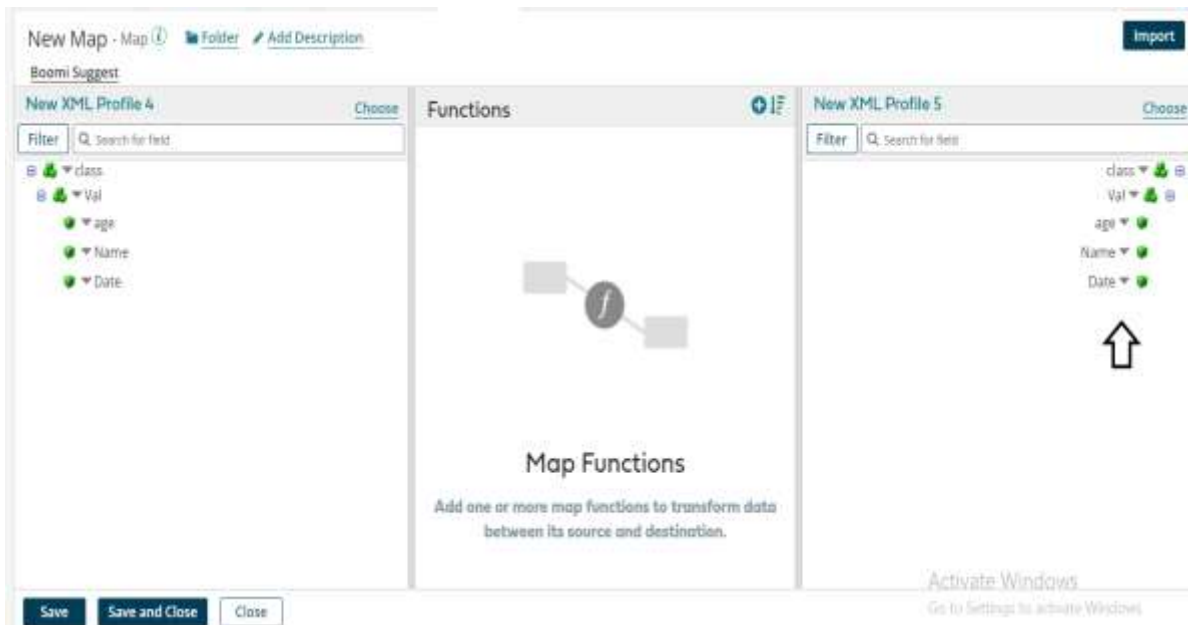
©TGH Software Solutions Pvt. Ltd.

No part of this document may be copied, reproduced, republished, uploaded, posted, publicly displayed, encoded, translated, transmitted or distributed in any way to any other computer, server, website or other medium for publication or distribution, without TGH's prior written consent

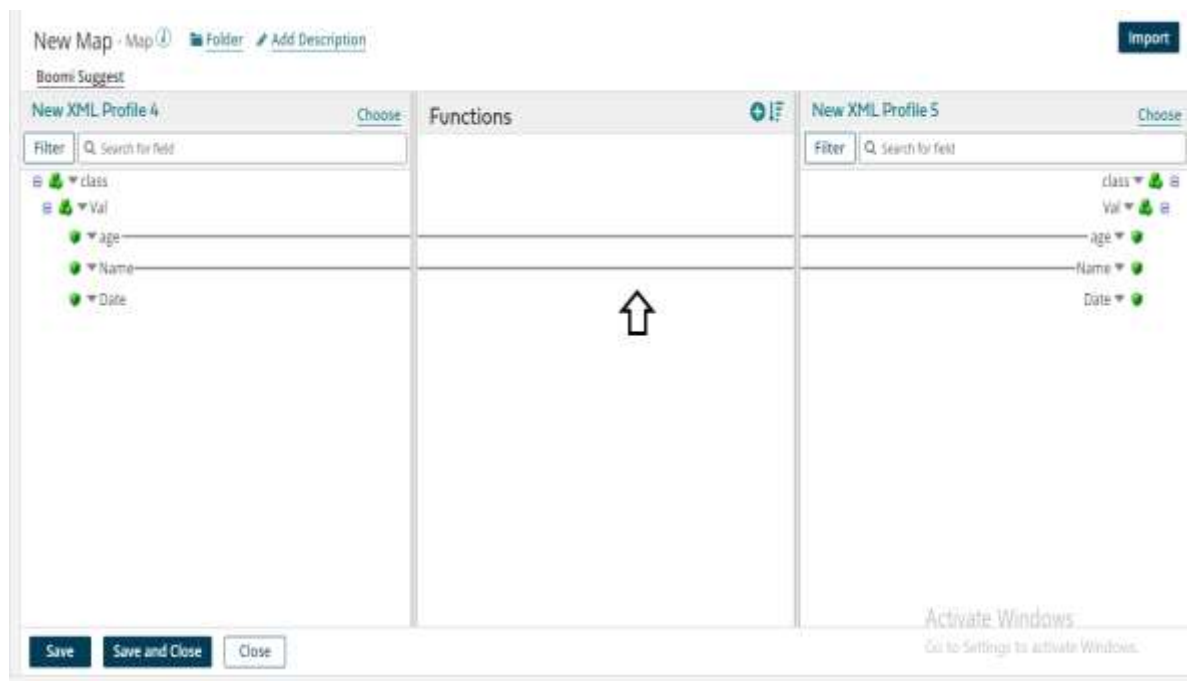




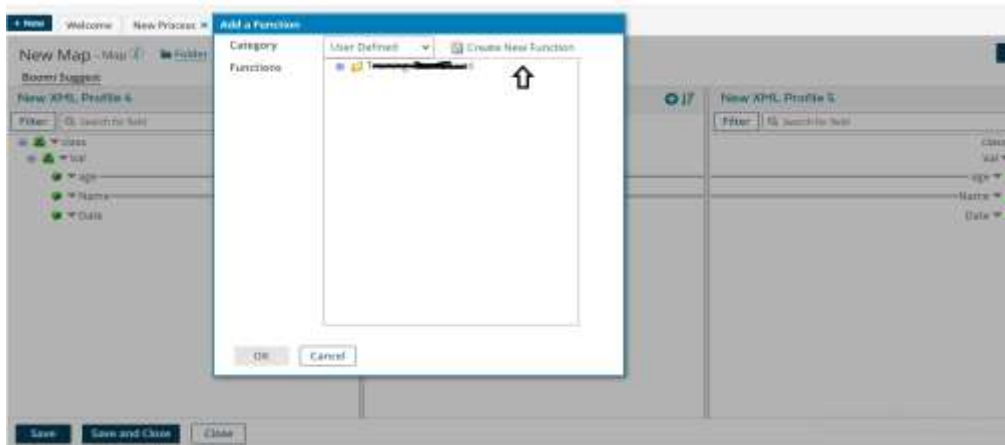
**Step 15:** Follow the same process for right side I.e., Map Destination.



**Step 16:** Now, map the age and name fields as follow and click on the “+” in the Functions tab to add a new function.



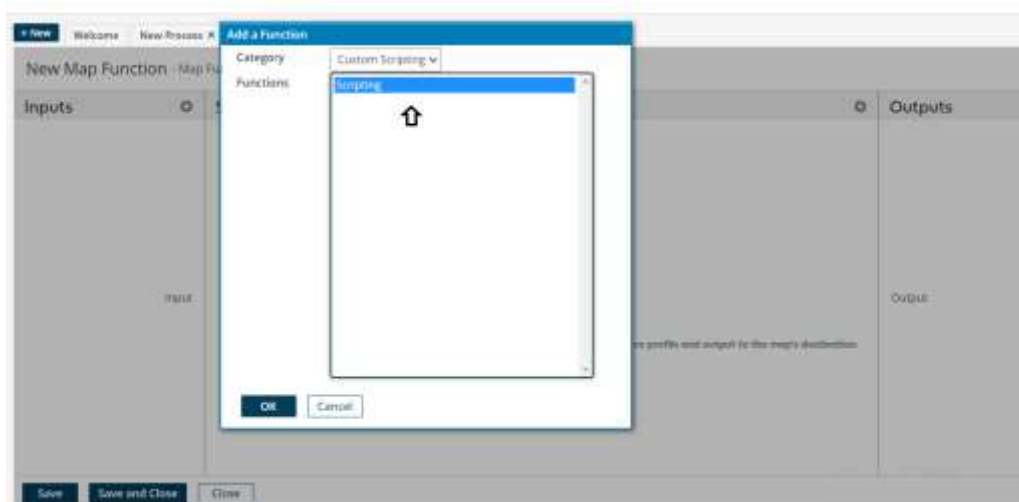
**Step 17:** To add custom script, we need to select the “User defined” from drop down and click on “Create new function”.



**Step 18:** Give the input as “Input” and output as “Output” as below and click on “+”.



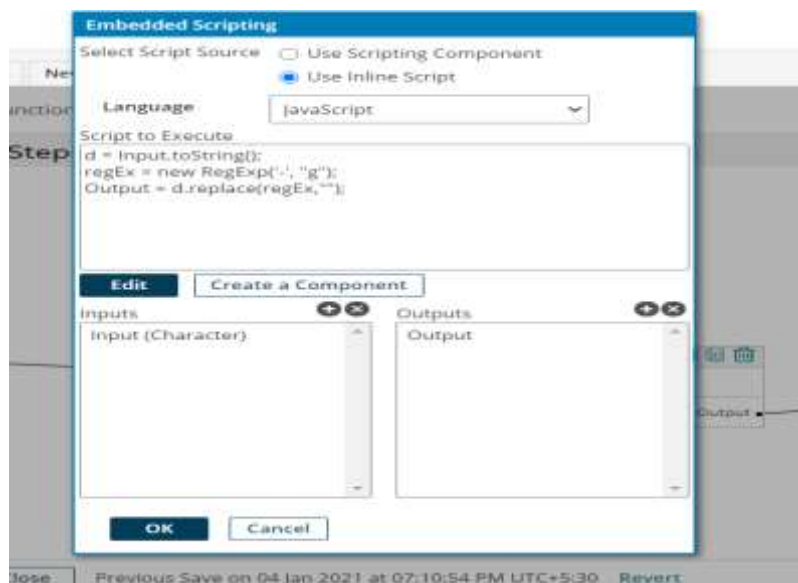
**Step 19:** Select “Custom scripting” from drop down and select “Scripting” and click ok.



**Step 20:** Select JavaScript from dropdown and add Input and output. Add the below script and click ok.

```
d = Input.toString();
regEx = new RegExp('-', 'g');
Output = d.replace(regEx, "");
```

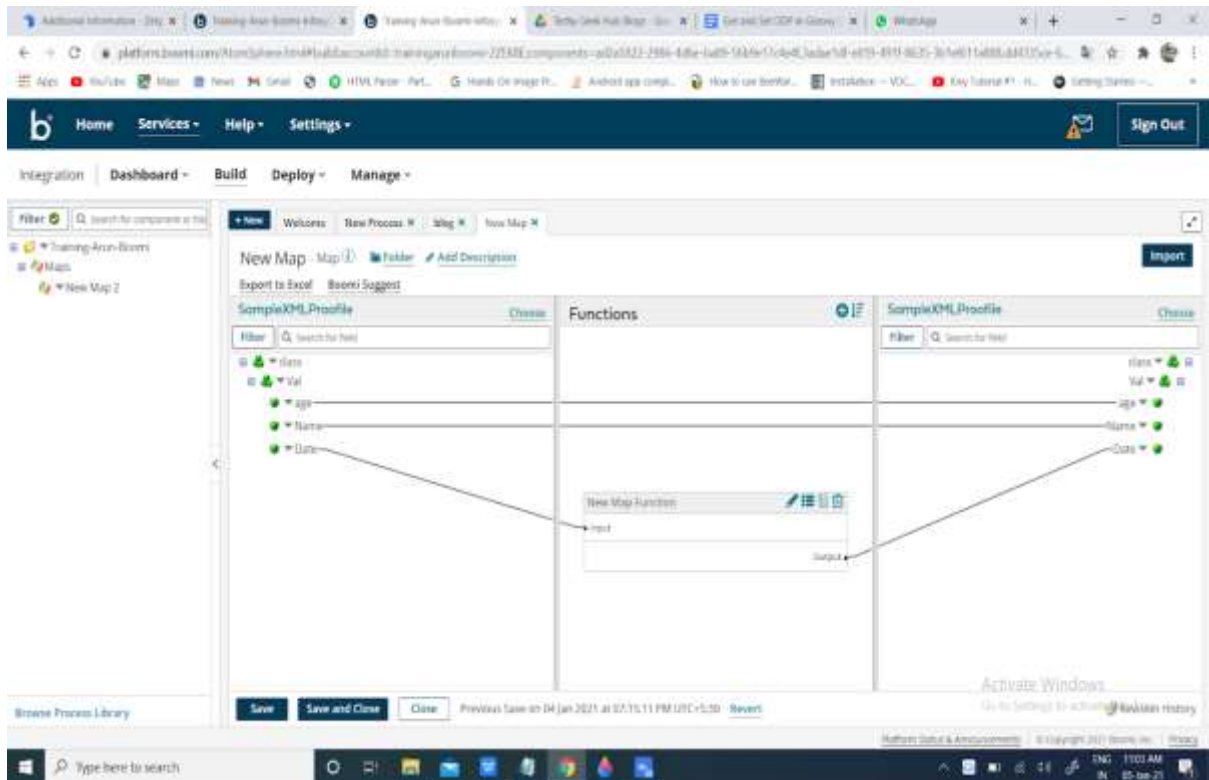
- In the first line, we will convert Input to string using “toString()” and store in a variable “d”
- In the next two lines, we will replace “-” with “” using “replace()”.



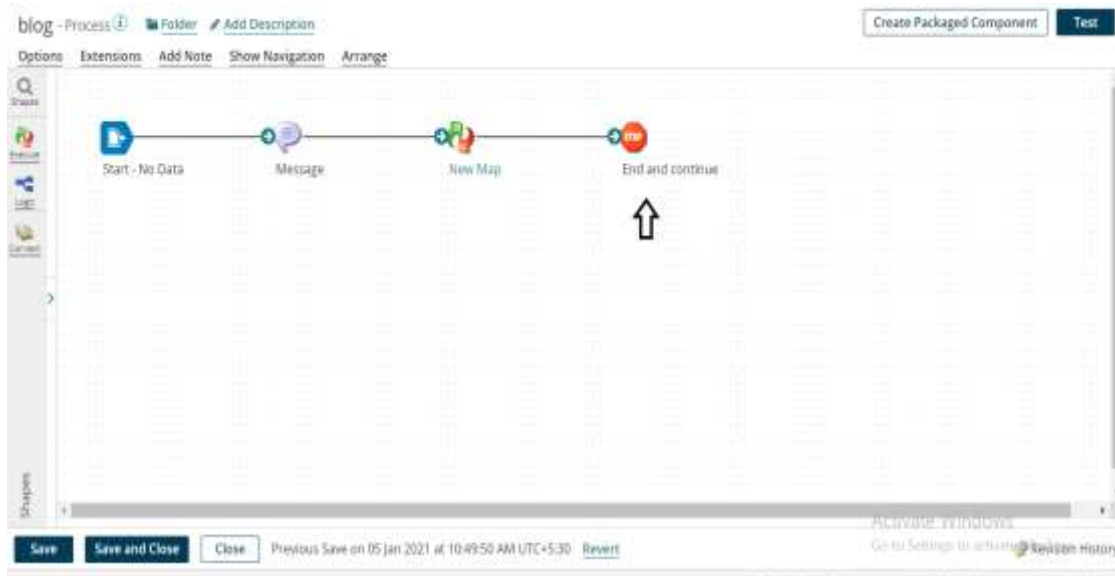
**Step 21:** Map the input and output as below and click on “Save and close”.



**Step 22:** Provide one to one mapping as follows and click on “Save and close”.



**Step 23:** Search for Stop shape in search pallet. Drag and drop the Stop shape onto process canvas and place it after Map shape.

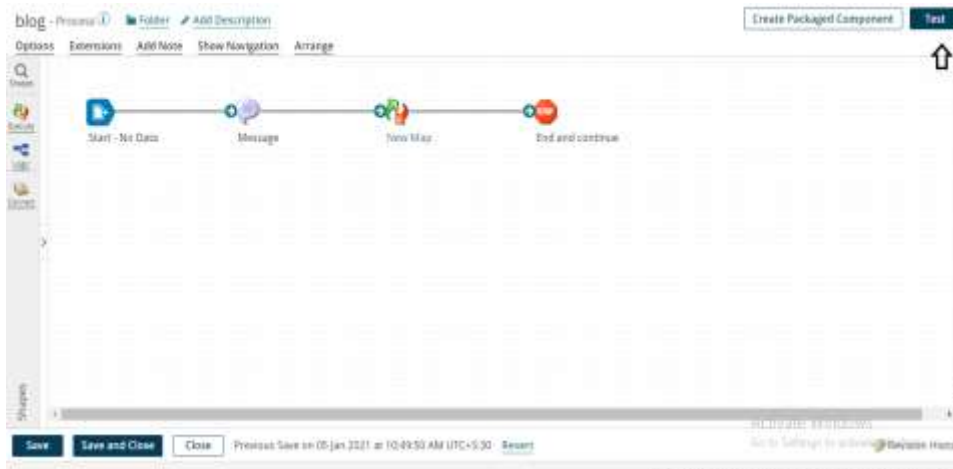


©TGH Software Solutions Pvt. Ltd.

No part of this document may be copied, reproduced, republished, uploaded, posted, publicly displayed, encoded, translated, transmitted or distributed in any way to any other computer, server, website or other medium for publication or distribution, without TGH's prior written consent



**Step 24:** Now Test the process by selecting the atom. Click on “Run Test”.



**Step 25:** Click on the stop shape and click on “Shape source data” and view the document.

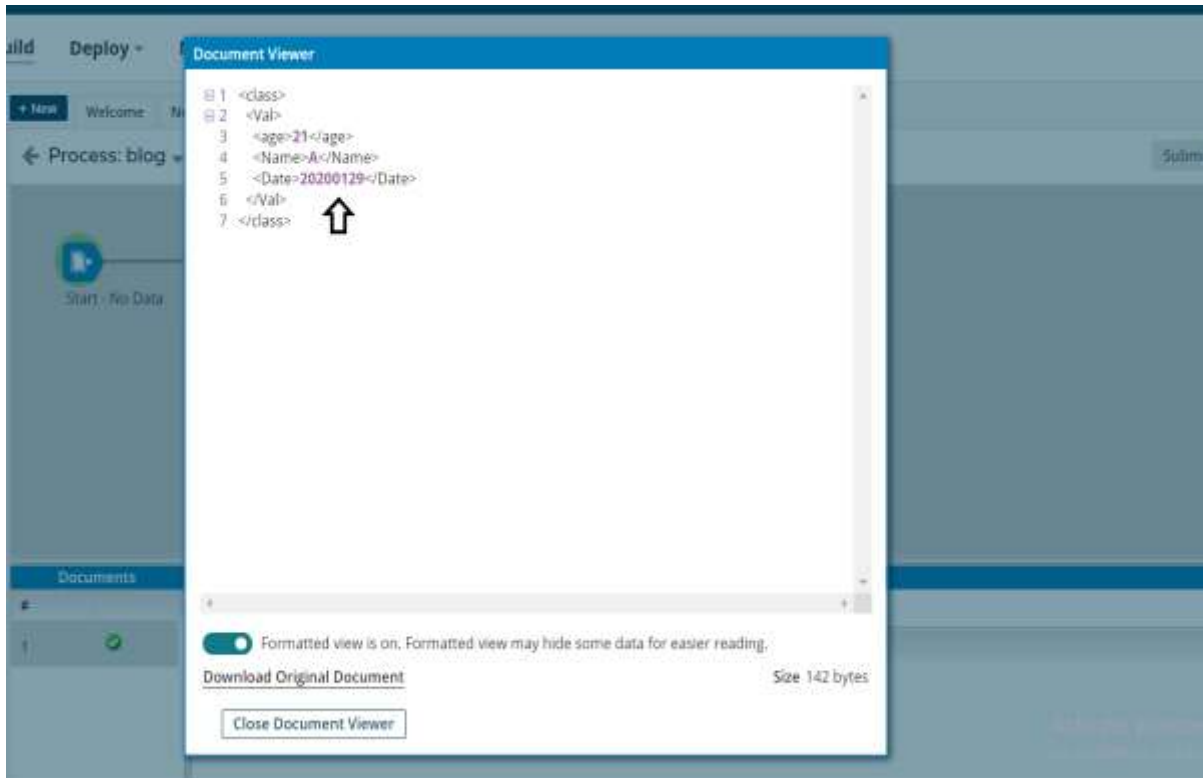


©TGH Software Solutions Pvt. Ltd.

No part of this document may be copied, reproduced, republished, uploaded, posted, publicly displayed, encoded, translated, transmitted or distributed in any way to any other computer, server, website or other medium for publication or distribution, without TGH's prior written consent



**Step 26:** We see that the date had formatted to YYYYMMDD format.





# TGH

Making Integrations Simpler



## TGH Software Solutions Pvt. Ltd.

[www.techygeekhub.com](http://www.techygeekhub.com)

At TGH, we specialize in driving digital transformation through seamless Integration Technologies.

Operating as an INTEGRATION FACTORY, we serve as a one-stop shop for all your integration needs. Our expert team is well-versed in enterprise software and legacy system integration, along with leading iPaaS technologies like Boomi, MuleSoft, Workato, OIC, and more.

We're committed to enhancing business processes and solving problems through our integration expertise.



### Email address

[connect@techygeekhub.com](mailto:connect@techygeekhub.com)



### Phone number

+ 011-40071137  
+ 91-8810610395



### Our offices

#### Noida Office

iThum  
Plot No -40, Tower A,  
Office No: 712,  
Sector-62, Noida,  
Uttar Pradesh, 201301

#### Hyderabad Office

Plot no: 6/3, 5th Floor,  
Techno Pearl Building,  
HUDA Techno Enclave,  
HITEC City, Hyderabad,  
Telangana 500081

